

TECHNICAL MANUAL

**ORGANIZATIONAL, DIRECT SUPPORT, AND GENERAL SUPPORT
MAINTENANCE REPAIR PARTS AND SPECIAL TOOLS LIST
[INCLUDING DEPOT MAINTENANCE REPAIR PARTS
AND SPECIAL TOOLS]**

FOR

**COUNTER, PULSE,
ELECTRONIC TD-1338(V)1/USM
[NSN 6625-01-120-7832]**

This copy is a reprint which includes current
pages from Change 1.

HEADQUARTERS, DEPARTMENT OF THE ARMY

23 AUGUST 1983

Change }
No. 1 }

**HEADQUARTERS
DEPARTMENT OF THE ARMY
Washington, DC, 9 September 1985**

**Organizational, Direct Support, and General Support
Maintenance Repair Parts and Special Tools List
(Including Depot Maintenance Repair Parts and Special Tools)
For
COUNTER, PULSE, Electronic TD-1338(V)1/USM
(NSN 6625-01-120-7832)
Basic Manual Current of 23 August 1983
Change 1 Current as of 14 September 1984**

TM 11-6625-3031-24P, 23 August 1983 is changed as follows:

1. Remove old pages and insert new pages as indicated below. New or changed material is indicated by a vertical bar in the margin of the page. Added or revised illustrations are indicated by a vertical bar adjacent to the identification number. Action change codes indicated in the left-hand margin of the listing page denote the following

N—indicates an added item, C—indicates a change in data, and R—indicates a change in NSN only.

<i>Remove pages</i>	<i>Insert pages</i>
15 through 18	15 through 18
21/(22 blank)	21/(22 blank)

2. File this change sheet in front of the publication.

By Order of the Secretary of the Army:

JOHN A. WICKHAM JR.
General, United States Army
Chief of Staff

Official:

DONALD J. DELANDRO
Brigadier General, United States Army
The Adjutant General

DISTRIBUTION:

To be distributed in accordance with DA Form 12-34B literature requirements for TMDE/Calibration & Repair.

Technical Manual }
 No. 11-6625-3031-24P }

HEADQUARTERS
 DEPARTMENT OF THE ARMY
 Washington, DC, 23 August 1983

**ORGANIZATIONAL, DIRECT SUPPORT, AND GENERAL SUPPORT
 MAINTENANCE REPAIR PARTS AND SPECIAL TOOLS LIST
 (INCLUDING DEPOT MAINTENANCE REPAIR PARTS AND SPECIAL TOOLS)
 FOR
 COUNTER, PULSE, ELECTRONIC TD-1338(V)1/USM
 (NSN 6625-01-120-7832)
 Current as of 21 March 1983**

REPORTING ERRORS AND RECOMMENDING IMPROVEMENTS

You can help improve this manual. If you find any mistakes or if you know of a way to improve the procedures, please let us know. Mail your letter, DA Form 2028 (Recommended Changes to Publications and Blank Forms), or DA Form 2028-2 located in back of this manual direct to Commander, US Army Communications-Electronics Command and Fort Monmouth, ATTN: DRSEL-ME-MP, Fort Monmouth, NJ 07703.

In either case, a reply will be furnished direct to you.

TABLE OF CONTENTS

	<i>Page</i>	<i>ILLUS Figure</i>
Section I. Introduction	1	
II. Repair Parts List	5	
Group 00 Counter, Pulse, Electronic TD-1338(V)1/USM	5	1
01 Counter Assembly, Basic	9	2
Frame Assembly, Basic	13	3
Panel Assembly, Front	15	4
Panel Assembly, Rear	17	5
02 Converter Assembly	19	6
Section III. Special Tools List (Not applicable)		
IV. National Stock Number and Part Number Index	20	

SECTION I

INTRODUCTION

1. Scope

This manual lists spares and repair parts; special tools; special test, measurement, and diagnostic equipment (TMDE), and other special support equipment required for performance of organizational, direct support, and general support maintenance of the TD-1338(V)I/USM. It authorizes the requisitioning and issue of spares and repair parts as indicated by the source and maintenance codes.

2. General

This Repair Parts and Special Tools List is divided into the following sections:

a. Section II. Repair Parts List. A list of spares and repair parts authorized for use in the performance of maintenance. The list also includes parts which must be removed for replacement of the authorized parts. Parts lists are composed of functional groups in numeric sequence, with the parts in each group listed in figure and item number sequence.

b. Section III. Special Tools List. Not applicable.

c. Section IV National Stock Number and Part Number Index. A list, in National item identification number (NIIN) sequence, of all National stock numbers (NSN) appearing in the listings, followed by a list, in alphameric sequence, of all part numbers appearing in the listings. National stock numbers and part numbers are cross-referenced to each illustration figure and item number appearance.

3. Explanation of Columns

a. illustration. This column is divided as follows:

(1) *Figure number.* Indicates the figure number of the illustration on which the item is shown.

(2) *Item number.* The number used to identify item called out in the illustration.

b. Source, Maintenance, and Recoverability (SMR) Codes.

(1) *Source code.* Source codes indicate the manner of acquiring support items for maintenance, repair, or overhaul of end items. Source codes are entered in the

first and second positions of the Uniform SMR Code format as follows:

Code Definition

PA — Item procured and stocked for anticipated or known usage.

XA — Item is not procured or stocked because the requirements for the item will result in the replacement of the next higher assembly.

XB — Item is not procured or stocked. If not available through salvage, requisition.

XC — Installation drawing, diagram, instruction sheet, field service drawing, that is identified by manufacturer's part number.

NOTE

Cannibalization or salvage may be used as a source of supply for any items source coded above except those coded XA and aircraft support items as restricted by AR 700-42.

(2) *Maintenance code.* Maintenance codes are assigned to indicate the levels of maintenance authorized to USE and REPAIR support items. The maintenance codes are entered in the third and fourth positions of the Uniform SMR Code format as follows:

(a) The maintenance code entered in the third position will indicate the lowest maintenance level authorized to remove, replace, and use the support item. The maintenance code entered in the third position will indicate *one* of the following levels of maintenance:

Code Application/ Explanation

O — Support item is removed, replaced, used at the organizational level.

H — Support item is removed, replaced, used at the general support level.

(b) The maintenance code entered in the fourth position indicates whether the item is to be repaired and identifies the lowest maintenance level with the capability to perform complete repair (i.e., all authorized maintenance functions). This position will contain one of the following maintenance codes:

H — The lowest maintenance level capable of complete repair of the support item is the general support level.

Z — Nonreparable. No repair is authorized.

(3) *Recoverability code.* Recoverability codes are assigned to support items to indicate the disposition action on unserviceable items. The recoverability code is entered in the fifth position of the Uniform SMR Code format as follows:

Recoverability
codes Definition

Z — Nonreparable item. When unserviceable, condemn and dispose at the level indicated in position 3.

H — Repairable item. When uneconomically repairable, condemn and dispose at the general support level.

Recoverability
codes Definition

A — Item requires special handling or condemnation procedures because of specific reasons (i.e., precious metal content, high dollar value, critical material or hazardous material). Refer to appropriate manuals/ directives for specific instructions.

c. National Stock Number. Indicates the National stock number assigned to the item and will be used for requisitioning purposes.

d. Federal Supply Code for Manufacturer (FSCm). The FSCM is a 5-digit numeric code listed in SB 708-41/42 which is used to identify the manufacturer, distributor, or Government agency, etc.

e. Part Number. Indicates the primary number used by the manufacturer (individual, company, firm, corporation, or Government activity), which controls the design and characteristics of the item by means of its engineering drawings, specifications, standards, and inspection requirements to identify an item or range of items.

NOTE

When a stock numbered item is requisitioned, the repair part received may have different part number than the part being replaced.

f. Description. Indicates the Federal item name and, if required, a minimum description to identify the item.

g. Unit of Measure (U/M). Indicates the standard of the basic quantity of the listed item as used in performing the actual maintenance function. This measure is expressed by a two-character alphabetical abbreviation (e.g., ea, in, pr, etc). When the unit of measure differs from the unit of issue, the lowest unit of issue that will satisfy the required units of measure will be requisitioned.

h. Quantity Incorporated in Unit. Indicates the quantity of the item used in the breakout shown on the illustration figure, which is prepared for a functional group, subfunctional group, or an assembly. A "V" appearing in this column in lieu of a quantity indicates that no specific quantity is applicable, (e.g., shims, spacers, etc).

4. Special Information

a. The following publications pertain to the TD-1388(V)1/USM and it's components:

TB 9-6625-1978-35, Microwave Pulse Counter TD- 1338 (EIP Model 451) and Autohet Frequency Counter (EIP Model 351 D)

TM 11-6625-303 I -14, Counter, Pulse, Electronic TD-1338(V)I/USM

b. National stock numbers (NSN'S) that are missing from P source coded items have been applied for and will be added to this TM by future change/revision when they are entered in the Army Master Data File (AMDF). Until the NSN'S are established and published, submit exception requisitions to: Commander, US Army Communications-Electronics Command and Fort Monmouth, ATTN: DRSEL-MM, Fort Monmouth, NJ 07703 for the part required to support your equipment.

5. How to Locate Repair Parts

a. When National stock number or part number is unknown.

(1) *First.* Using the table of contents, determine the functional group within which the item belongs. This is necessary since illustrations are prepared for functional groups and listings are divided into the same groups.

(2) *Second.* Find the illustration covering the functional group to which the item belongs.

(3) *Third.* Identify the item on the illustration and note the illustration figure and item number of the item.

(4) *Fourth.* Using the Repair Parts Listing, find the figure **and item number noted on the illustration.**

b. When National stock number or part number is known.

(1) *First.* Using the Index of National Stock Numbers and Part Numbers, find the pertinent National stock number or part number. This index is in NIIN sequence followed by a list of part numbers in alphameric

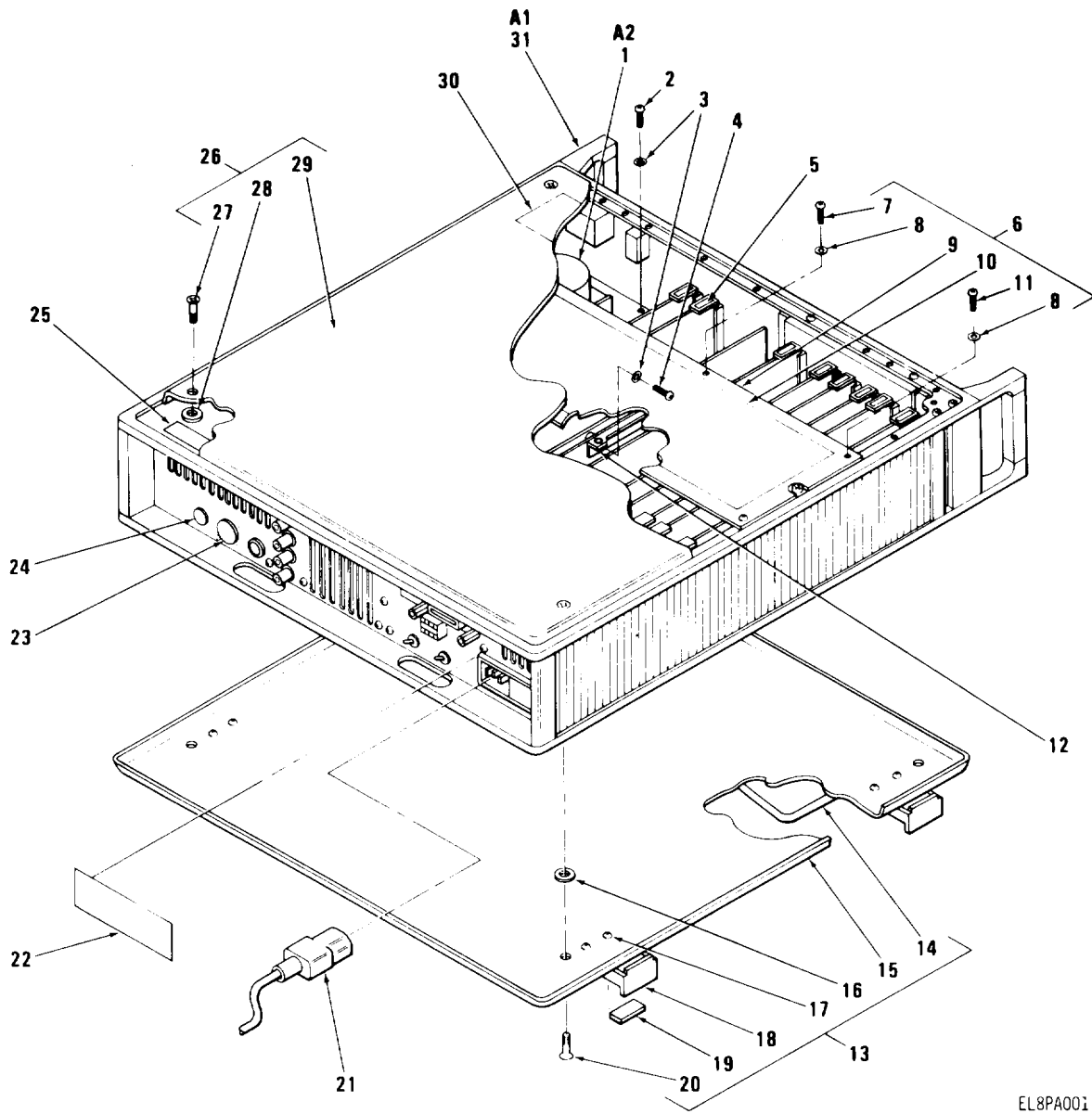
sequence, cross-referenced to the illustration figure number and item number.

(2) *Second.* After finding the figure and item number, **locate the figure and item number in the repair parts list.**

6. Abbreviations

Not applicable.

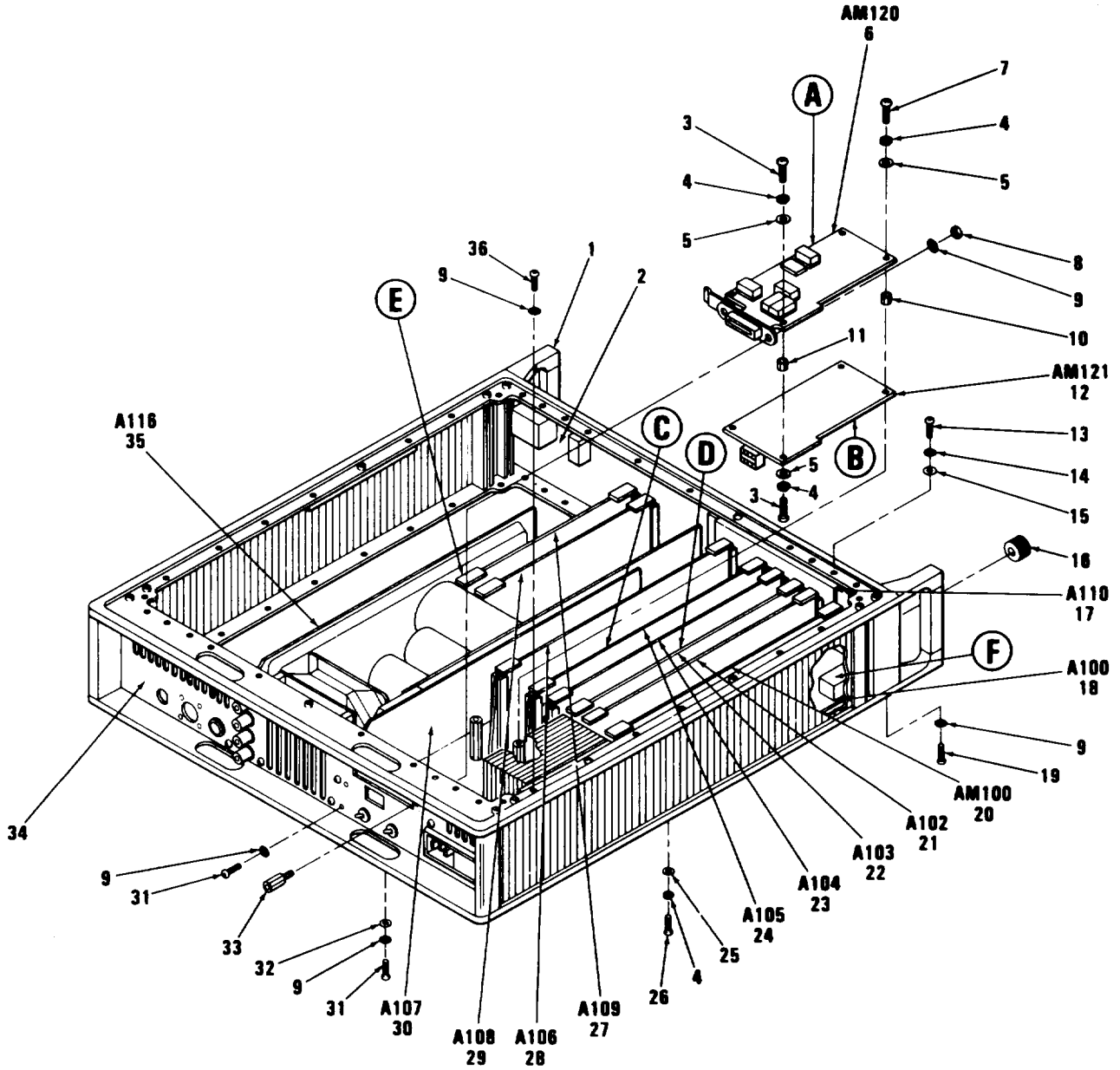
(Next printed pages is 4)



EL8PA00i

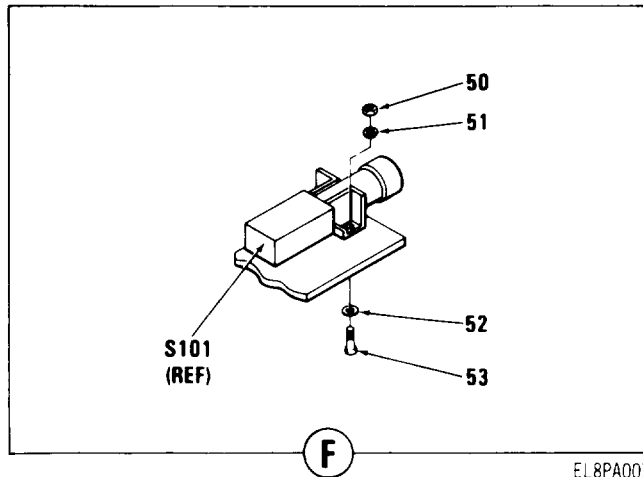
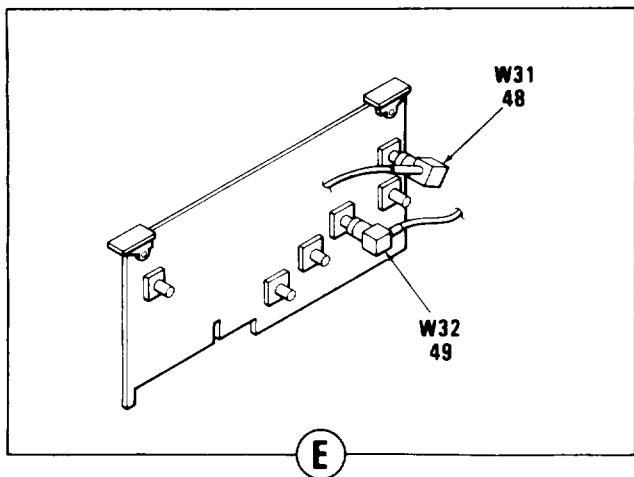
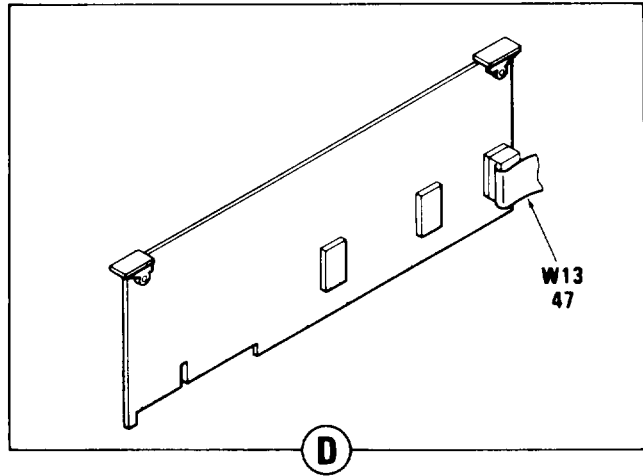
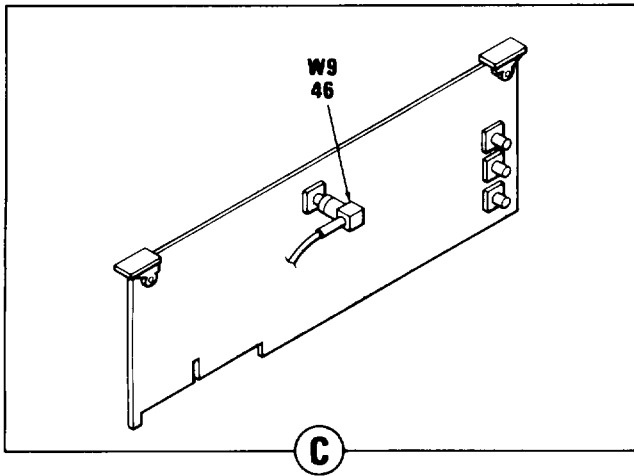
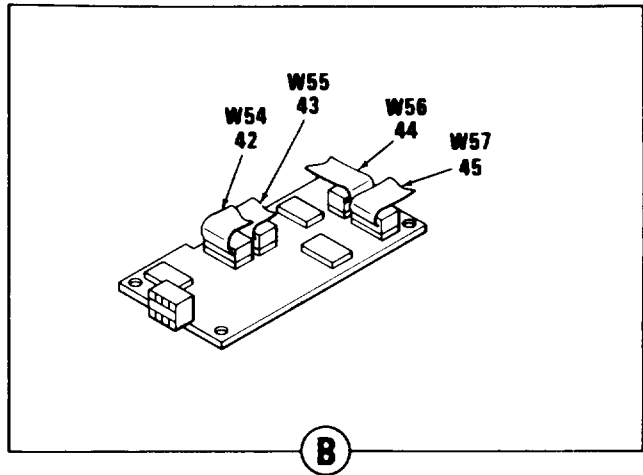
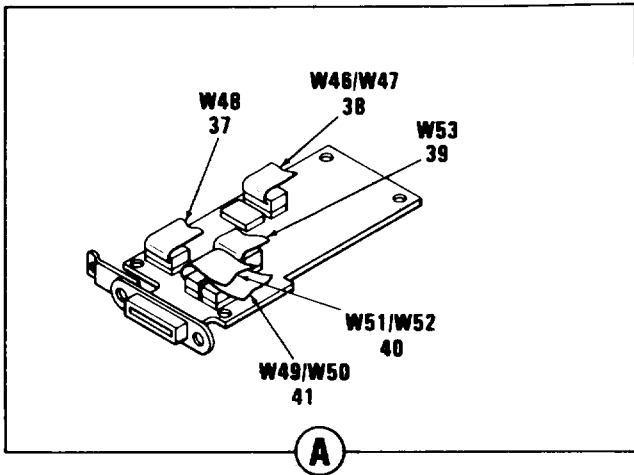
Figure 1. Counter, Pulse, Electronic TD-1338(V)1/USM

SECTION II									
(1)	(2)	(3)	(4)	(5)	(6)	(7)	(8)		
ILLUSTRATION					DESCRIPTION		QTY		
(a)	(b)	NATIONAL		PART			INC		
FIG	ITEM	STOCK		NUMBER			IN		
NO	NO	NUMBER	FSCM	NUMBER		USABLE ON CODE	U/M	UNIT	
GROUP 00 COUNTER, PULSE, ELECTRONIC									
TD-1338(V)1/USM									
1	1	XBHHH		34257	2010090-01		EA	1	
1	2	PAHZZ	5305-00-054-6652	96906	MS51957-28		EA	2	
1	3	PAHZZ	5310-00-616-3555	96906	MS35333-71		EA	8	
1	4	PAHZZ	5305-00-054-6650	96906	MS51957-26		EA	6	
1	5	XBHZZ		34257	5560034		EA	1	
1	6	XBHHH		34257	2010253-01		EA	1	
1	7	PAHZZ	5305-00-763-6963	96906	MS51959-28		EA	2	
1	8	XBHZZ		34257	5000096		EA	6	
1	9	XBHZZ		34257	5210181		EA	1	
1	10	XC		34257	5560120		EA	1	
1	11	PAHZZ	5305-00-727-8832	96906	MS51959-29		EA	4	
1	12	XBHZZ		34257	5210183		EA	1	
1	13	XBHHH		34257	2010252-01		EA	1	
1	14	XBHZZ		21793	453458		EA	1	
1	15	XBHZZ		34257	5210024		EA	1	
1	16	XBHZZ		34257	5000096		EA	4	
1	17	PAHZZ	5305-00-139-6757	96906	MS51861-34C		EA	8	
1	18	PAHZZ		34257	5220003		EA	4	
1	19	XBHZZ		34257	5220002		EA	V	
1	20	XBHZZ		34257	5000097		EA	4	
1	21	PAOZZ	6150-01-004-8773	28480	8120-1348		EA	1	
1	22	XC		34257	5560004		EA	1	
1	23	PAHZZ	5340-00-975-1908	83330	655		EA	1	
1	24	PAHZZ	5340-00-865-0220	83330	652		EA	1	
1	25	XBHZZ		34257	5560005		EA	1	
1	26	XBHHH		34257	2010251-01		EA	1	
1	27	XBHZZ		34257	5000097		EA	4	
1	28	XBHZZ		34257	5000096		EA	4	
1	29	XBHZZ		34257	5210023		EA	1	
1	30	XBHZZ		34257	5560126		EA	1	
1	31	XBHHH		34257	2010247-01		EA	1	



EL8PA002

Figure 2. Counter Assembly, Basic (Sheet 1 of 2)

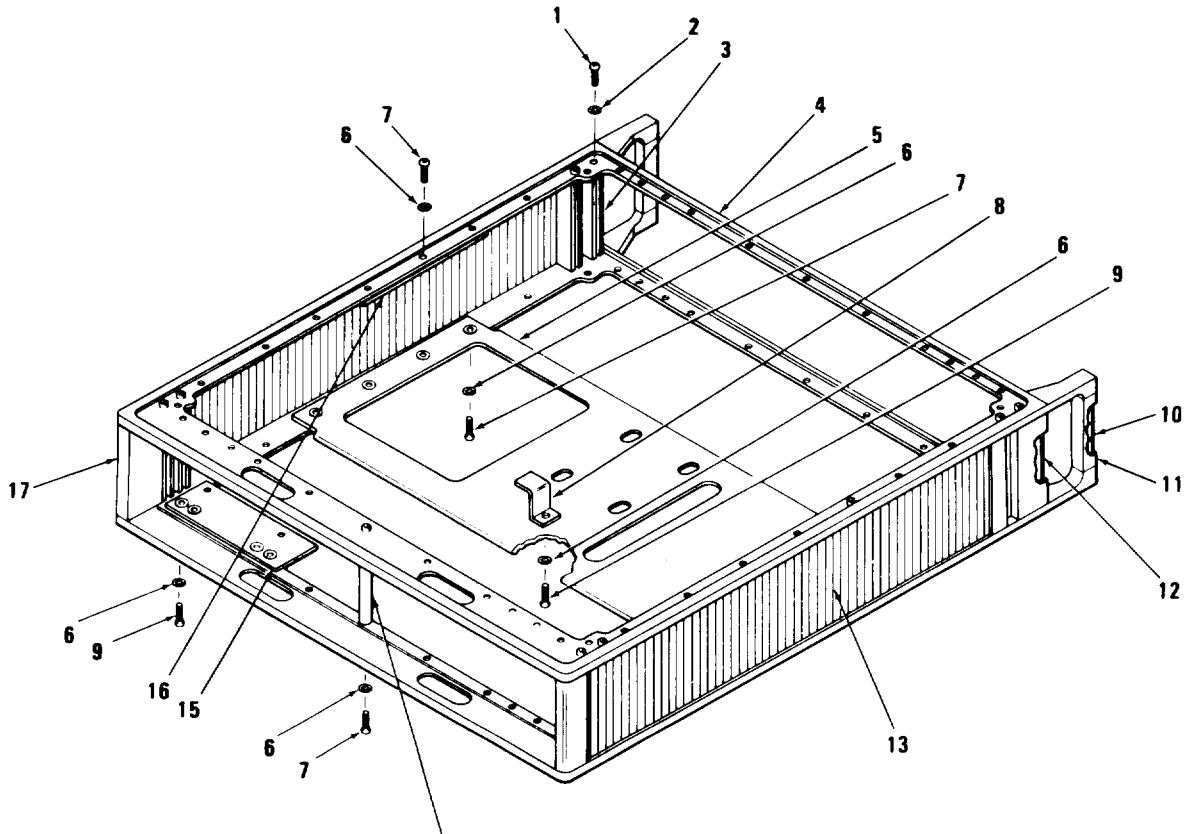


EL8PA003

Figure 2. Counter Assembly, Basic (Sheet 2 of 2)

SECTION II (1) ILLUSTRATION		(2)	(3)	(4)	(5)	(6)	(7)	(8)
(a) FIG NO	(b) ITEM NO	SMR CODE	NATIONAL STOCK NUMBER	FSCM	PART NUMBER	DESCRIPTION	USABLE ON CODE	QTY INC IN UNIT
GROUP 01 COUNTER ASSEMBLY, BASIC								
2	1	XBHZZ		34257	2010250-01	FRAME ASSY,BASIC		EA 1
2	2	XBHZZ		34257	2010249-01	PANEL ASSY,FRONT		EA 1
2	3	PAHZZ	5305-00-054-5647	96906	MS51957-13	SCREW,MACHINE		EA 4
2	4	PAHZZ	5310-00-933-8118	96906	MS35338-135	WASHER,LOCK		EA 19
2	5	PAHZZ	5310-00-782-1349	96906	MS15795-804	WASHER,FLAT		EA 6
2	6	PAHZA	5999-01-078-9624	34257	2020086-01	CIRCUIT CARD ASSEMB		EA 1
2	7	PAHZZ	5305-00-054-5654	96906	MS51957-20	SCREW,MACHINE		EA 2
2	8	PAHZZ	5310-00-982-6813	96906	MS21044-C06	NUT,SELF-LOCKING,HE		EA 1
2	9	PAHZZ	5310-00-616-3555	96906	MS35333-71	WASHER,LOCK		EA 13
2	10	PAHZZ	5310-01-059-3597	83330	8827	NUT,PLAIN,HEXAGON		EA 2
2	11	PAHZZ		83330	8826	SPACER,SLEEVE		EA 2
2	12	PAHZA	5999-01-078-9625	34257	2020087-01	CIRCUIT CARD ASSEMB		EA 1
2	13	PAHZZ	5305-00-054-5649	96906	MS51957-15	SCREW,MACHINE		EA 2
2	14	PAHZZ	5310-00-550-3715	96906	MS35333-70	WASHER,LOCK		EA 12
2	15	XBHZZ		34257	5000220	WASHER,SPRING TNSN		EA 2
2	16	PAOZZ		86797	RB-67-0-M	KNOB		EA 1
2	17	PAHZA	6625-01-076-6636	34257	2020080-01	CIRCUIT CARD ASSEMB		EA 1
2	18	PAHZA	5999-01-129-0042	34257	2020205-01	CIRCUIT CARD ASSEMB		EA 1
2	19	PAHZZ	5305-00-054-6651	96906	MS51957-27	SCREW,MACHINE		EA 4
2	20	PAHZA	6625-01-080-2000	34257	2020060-02	CIRCUIT CARD ASSEMB		EA 1
2	21	PAHZA	6625-01-075-2663	34257	2020084-01	CIRCUIT CARD ASSEMB		EA 1
2	22	PAHZA	6625-01-076-6633	34257	2020083-01	CIRCUIT CARD ASSEMB		EA 1
2	23	PAHZA	6625-01-075-2664	34257	2020074-01	CIRCUIT CARD ASSEMB		EA 1
2	24	PAHZA	6625-01-076-6634	34257	2020085-01	CIRCUIT CARD ASSEMB		EA 1
2	25	PAHZZ	5310-00-595-6211	96906	MS15795-803	WASHER,FLAT		EA 13
2	26	PAHZZ	5305-00-054-5648	96906	MS51957-14	SCREW,MACHINE		EA 15
2	27	PAHZA	6625-01-075-2662	34257	2020079-01	CIRCUIT CARD ASSEMB		EA 1
2	28	PAHZA	6625-01-075-2665	34257	2020081-01	CIRCUIT CARD ASSEMB		EA 1
2	29	PAHZA	5999-01-078-7063	34257	2020078-02	CIRCUIT CARD ASSEMB		EA 1
2	30	PAHZA	6625-01-075-2666	34257	2020077-01	CIRCUIT CARD ASSEMB		EA 1
2	31	PAHZZ	5305-00-054-6650	96906	MS51957-26	SCREW,MACHINE		EA 6
2	32	PAHZZ	5310-00-880-5976	96906	MS15795-806	WASHER,FLAT		EA 2
2	33	XAHZZ		34257	5210132	ADAPTER		EA 1
2	34	XBHHH		34257	2010248-01	PANEL ASSY,REAR		EA 1
2	35	PAHZZ	6625-01-077-6512	34257	2010086-01	DELAY LINE		EA 1
2	36	PAHZZ	5305-00-054-6652	96906	MS51957-28	SCREW,MACHINE		EA 4
2	37	PAHZZ	5995-01-085-3754	34257	2040138-01	CABLE ASSEMBLY,SPEC		EA 1
2	38	PAHZZ	5995-01-084-8166	34257	2040137-01	CABLE ASSEMBLY,SPEC		EA 1
2	39	PAHZZ	5995-01-084-8169	34257	2040139-01	CABLE ASSEMBLY,SPEC		EA 1

SECTION II								
(1)	(2)	(3)	(4)	(5)	(6)	(7)	(8)	
ILLUSTRATION					DESCRIPTION		QTY	
(a)	(b)	NATIONAL		PART			INC	
FIG	ITEM	STOCK		NUMBER			IN	
NO	NO	SMR	NUMBER	FSCM	NUMBER	USABLE ON CODE	U/M	
		CODE					UNIT	
2	40	PAHZZ	5995-01-084-8168	34257	2040123-01	CABLE ASSEMBLY, SPEC	EA	1
2	41	PAHZZ	5995-01-084-8167	34257	2040122-01	CABLE ASSEMBLY, SPEC	EA	1
2	42	PAHZZ	5995-01-084-8170	34257	2040140-01	CABLE ASSEMBLY, SPEC	EA	1
2	43	PAHZZ	5995-01-084-8171	34257	2040141-01	CABLE ASSEMBLY, SPEC	EA	1
2	44	PAHZZ	5995-01-084-8172	34257	2040142-01	CABLE ASSEMBLY, SPEC	EA	1
2	45	PAHZZ	6625-01-079-9076	34257	2040143-01	CABLE ASSEMBLY, SPEC	EA	1
2	46	PAHZZ		34257	2040085-01	CABLE, ASSY, RADIO, FR	EA	1
2	47	PAHZZ	5995-01-069-2246	34257	2040074-01	CABLE ASSEMBLY, SPEC	EA	1
2	48	PAHZZ		34257	2040103-01	CABLE, ASSY, RADIO, FR	EA	1
2	49	PAHZZ		34257	2040104-01	CABLE, ASSY, RADIO, FR	EA	1
2	50	PAHZZ	5310-00-812-4294	80205	NAS671C2	NUT, PLAIN, HEXAGON	EA	2
2	51	PAHZZ	5310-00-928-2690	96906	MS35338-134	WASHER, LOCK	EA	2
2	52	PAHZZ	5310-00-595-6761	96906	MS15795-802	WASHER, FLAT	EA	2
2	53	PAHZZ	5305-00-054-5637	96906	MS51957-3	SCREW, MACHINE	EA	2



EL8PA004

Figure 3. Frame Assembly, Basic

SECTION II								(7)	(8)
(1)	(2)	(3)	(4)	(5)	(6)			(7)	(8)
ILLUSTRATION		DESCRIPTION						QTY	
(a)	(b)	NATIONAL		PART				INC	
FIG	ITEM	SMR	STOCK			USABLE ON CODE		IN	
NO	NO	CODE	NUMBER	FSCM	NUMBER			U/M	UNIT
3	1	PAHZZ	5305-00-054-6671	96906	MS51957-46	SCREW,MACHINE		EA	16
3	2	PAHZZ	5310-00-543-2739	96906	MS35333-72	WASHER, LOCK		EA	16
3	3	XBHZZ		34257	5250001	POST, CORNER, FRONT		EA	2
3	4	PAHZZ		34257	5240001-18	FRAME, ENCLOSURE		EA	2
3	5	XBHZZ		34257	5210003	PANEL, SUPPORT		EA	1
3	6	PAHZZ	5310-00-616-3555	96906	MS35333-71	WASHER, LOCK		EA	15
3	7	PAHZZ	5305-00-054-6652	96906	MS51957-28	SCREW,MACHINE		EA	12
3	8	XBHZZ		34257	5210126	BRACKET, DBL ANGLE		EA	1
3	9	PAHZZ	5305-00-054-6650	96906	MS51957-26	SCREW,MACHINE		EA	3
3	10	PAHZZ		34257	5220025	TRIM, STRIP, HANDLE		EA	2
3	11	PAHZZ		34257	5250011	HANDEL, ENCLOSURE		EA	2
3	12	PAHZZ		34257	5220004	TRIM, STRIP, POST		EA	2
3	13	XBHZZ		34257	5210098	PANEL, SIDE		EA	2
3	14	XBHZZ		34257	5210061	POST, ELEC-MECH		EA	1
3	15	XBHZZ		34257	5210005	PLATE, SPACER		EA	1
3	16	XBHZZ		34257	5210182	RETAINER, MOUNTING		EA	2
3	17	XBHZZ		34257	5250002	POST, CORNER, REAR		EA	2

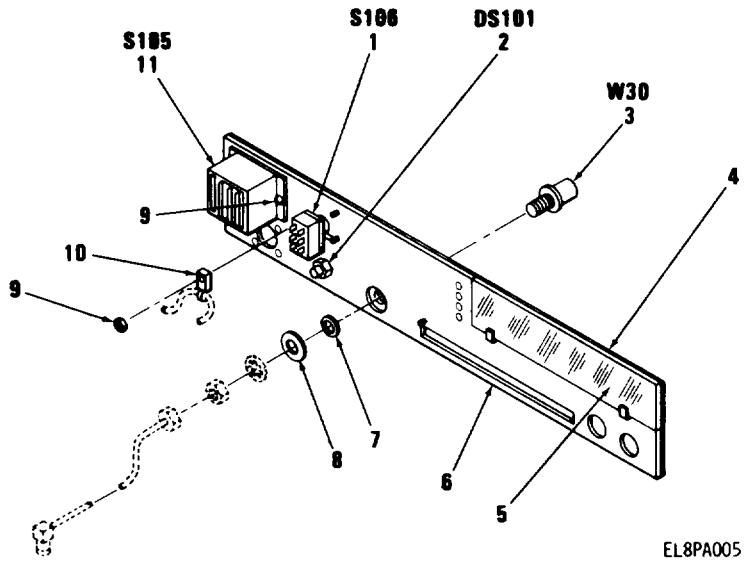
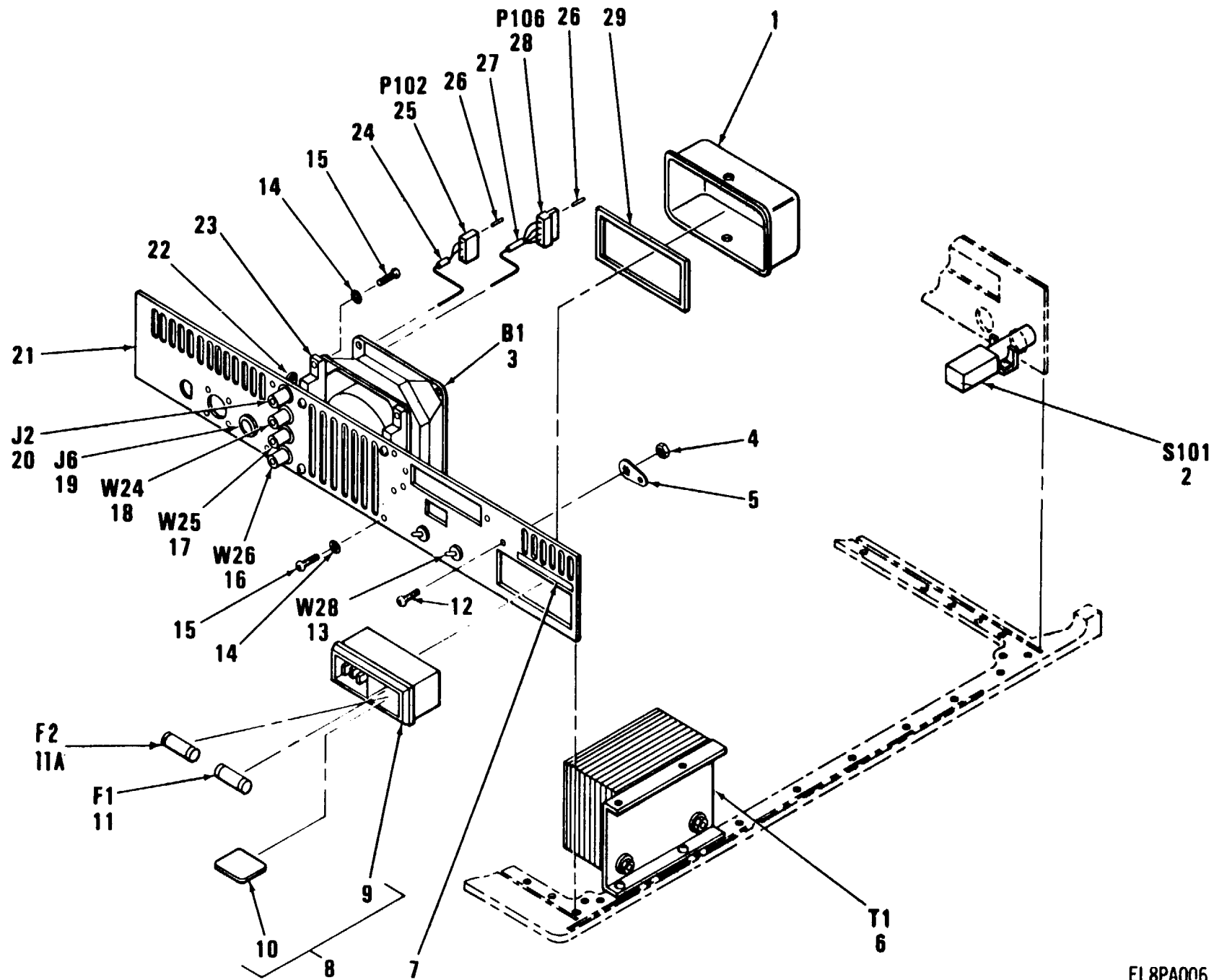


Figure 4. Panel Assembly, Front

SECTION II								
(1)	(2)	(3)	(4)	(5)	(6)	(7)	(8)	
ILLUSTRATION		DESCRIPTION					QTY	
(a)	(b)	NATIONAL		PART			INC	
FIG	ITEM	STOCK		NUMBER		USABLE ON CODE	IN	
NO	NO	CODE	NUMBER	FSCM	NUMBER		U/M	UNIT
4	1	PAHZZ	5930-00-499-7397	04009	83054SQ	SWITCH,TOGGLE	EA	1
4	2	PAHZZ		08717	2L5S-RTP-FL-5/15	LED	EA	1
4	3	PAHZZ		34257	2040102-01	CABLE,ASSY,RADIO,FR	EA	1
4	4	XBHZZ		34257	5210128	OVERLAY,FRONT PANEL	EA	1
4	5	XBHZZ		34257	5220016	WINDOW,OBSERVATION	EA	1
4	6	XBHZZ		34257	5210089	SUBPANEL,FRONT	EA	1
4	7	XBHZZ		34257	5100055	WASHER,FLAT	EA	1
4	8	XBHZZ		34257	5100056	WASHER,FLAT	EA	1
4	9	PAHZZ	5310-00-982-4999	96906	MS21044-C04	NUT,SELF-LOCKING,HE	EA	3
4	10	XBHZZ		26863	LTBTM400	STRAP,TIEDOWN,ELEC	EA	1
4	11	PAHZZ		34257	2010254-01	SWITCH,ASSY,THUMBWH	EA	1

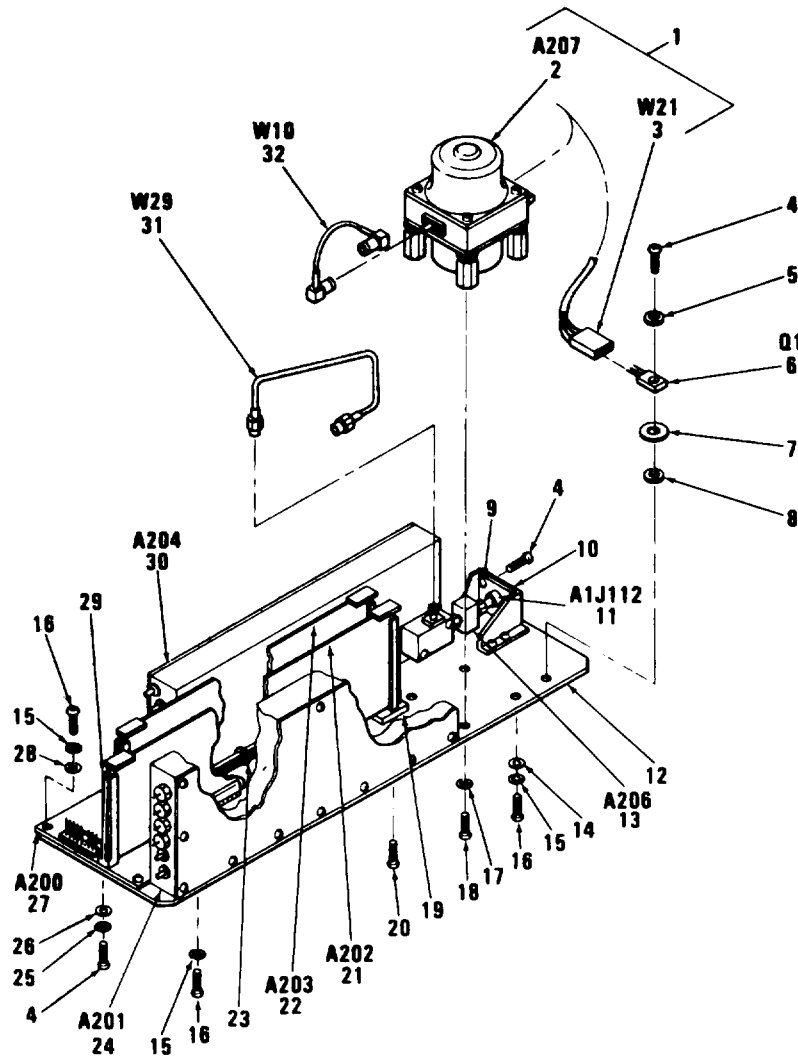
Figure 5. Panel Assembly, Rear
16 CHANGE 1



TM 11-6625-3031-24P

EL8PA006

SECTION II								
(1)	(2)	(3)	(4)	(5)	(6)		(7)	(8)
ILLUSTRATION					DESCRIPTION			QTY
(a)	(b)	NATIONAL		PART				INC
FIG	ITEM	STOCK		NUMBER				IN
NO	NO	SMR	NUMBER	FSCM	NUMBER	USABLE ON CODE	U/M	UNIT
CODE								
5	1	XBHZZ		34257	5220019	COVER, POWER MODULE	EA	1
5	2	PAHZZ	5930-01-041-8136	34257	4500008	SWITCH, PUSH	EA	1
5	3	PAHZZ		34257	2010255-01	FAN, ASSEMBLY, PC	EA	1
5	4	PAHZZ	5310-00-982-4999	96906	MS21044-C04	NUT, SELF-LOCKING, HE	EA	1
5	5	PAHZZ	5940-00-820-6235	83330	1416-4	TERMINAL, LUG	EA	1
5	6	PAHZZ		34257	2010256-01	TRANSFORMER, ASSEMBL	EA	1
5	7	XBHZZ		34257	5560138	PLATE, INSTRUCTION	EA	1
5	8	XBHHH		34257	2010268-01	CONNECTOR ASSY	EA	1
5	9	PAHZZ	6625-01-051-1984	05245	6J4	ADAPTER, POWER DISCARD PRINTED WIRING BOARD	EA	1
5	10	PAHZZ		05245	70-1495	CIRCUIT, CARD ASSEMB	EA	1
5	11	PAOZZ	5920-00-227-6179	81349	F02B250V1-1/2A	FUSE, CARTRIDGE	EA	1
5	11A	PAOZZ	5920-00-230-9128	27914	21001-0074	FUSE, CARTRIDGE 220/240 VAC OPERATION	EA	1
5	12	PAHZZ	5305-00-054-5647	96906	MS51957-13	SCREW, MACHINE	EA	1
5	13	PAHZZ		34257	2010257-01	SWITCH, ASSEMBLY	EA	1
5	14	PAHZZ	5310-00-616-3555	96906	MS35333-71	WASHER, LOCK	EA	8
5	15	PAHZZ	5305-00-054-6652	96906	MS51957-28	SCREW, MACHINE	EA	8
5	16	PAHZZ		34257	2040109-01	CABLE, ASSY, RADIO, FR	EA	1
5	17	PAHZZ		34257	2040087-01	CABLE, ASSY, RADIO, FR	EA	1
5	18	PAHZZ		34257	2040108-01	CABLE, ASSY, RADIO, FR	EA	1
5	19	XBHZZ		34257	2640022	CONNECTOR, RECEPTACL PN RA1.306NYL,MFD BY LEND USA INC., FSCMO NONE	EA	1
5	20	PAHZZ	5935-00-544-5684	91836	KC-79-35	CONNECTOR, RECEPTACL	EA	1
5	21	XBHZZ		34257	5210142	PANEL, REAR	EA	1
5	22	PAHZZ	5940-00-960-0124	83330	1497	TERMINAL, LUG	EA	1
5	23	XBHZZ		34257	5210016	SPACER, FAN MOUNTING	EA	2
5	24	XBHZZ		34257	5560037-01	SLEEVE SET, MKR, CA	EA	1
5	25	PAHZZ	5935-01-005-0017	27264	09-50-7031	CONNECTOR BODY, RECE	EA	1
5	26	PAHZZ	5999-01-035-7465	16550	70630-137	CONTACT, ELECTRICAL	EA	6
5	27	XBHZZ		34257	5560037-04	SLEEVE SET, MKR, CA	EA	1
5	28	PAHZZ		00779	640429-4	CONNECTOR, BODY, RECE	EA	1
5	29	XBHZZ		34257	5210119	SPACER, POWER MDL	EA	V



EL8PA007

Figure 6. Converter Assembly

SECTION II								
(1)	(2)	(3)	(4)	(5)	(6)	(7)	(8)	
ILLUSTRATION					DESCRIPTION		QTY	
(a)	(b)	NATIONAL		PART			INC	
FIG	ITEM	STOCK		NUMBER			IN	
NO	NO	NUMBER	FSCM	NUMBER	USABLE ON CODE	U/M	UNIT	
GROUP 02 CONVERTER ASSEMBLY								
6	1	XBHHH		34257 2010122-03	GEN ASSY, COMB, YIG	EA	1	
6	2	PAHZA	6625-01-077-8782	34257 2010097-02	YIG COMB GENERATOR	EA	1	
6	3	PAHZZ		34257 2040064-01	CABLE, ASSY, SP, ELEC	EA	1	
6	4	PAHZZ	5305-00-054-5648	96906 MS51957-14	SCREW, MACHINE	EA	7	
6	5	XBHZZ		34257 5000220	WASHER, SPRING TNSN	EA	1	
6	6	PAHZZ	5961-01-047-6728	04713 MJE350	TRANSISTOR	EA	1	
6	7	XBHZZ		34257 5000221	INSULATOR, WASHER	EA	1	
6	8	PAHZZ	5310-00-782-1349	96906 MS15795-804	WASHER, FLAT	EA	1	
6	9	PAHZZ	5310-00-982-4999	96906 MS21044-C04	NUT, SELF-LOCKING, HE	EA	4	
6	10	XBHZZ		34257 5210034	BRACKET, ATTEN MTG	EA	1	
6	11	PAHZZ		34257 2610031	CONNECTOR, RECP, ELEC	EA	1	
6	12	XBHZZ		34257 5210058-01	TRAY, CONVERTER	EA	1	
6	13	PAHZA	6625-01-126-2102	34257 2010113-01	LIMITER, ATTENUATOR LTD RPR PERMITTED, PER DRAWING	EA	1	
6	14	PAHZZ	5310-00-880-5976	96906 MS15795-806	WASHER, FLAT	EA	7	
6	15	PAHZZ	5310-00-616-3555	96906 MS35333-71	WASHER, LOCK	EA	16	
6	16	PAHZZ	5305-00-054-6650	96906 MS51957-26	SCREW, MACHINE	EA	16	
6	17	PAHZZ	5310-00-543-2739	96906 MS35333-72	WASHER, LOCK	EA	4	
6	18	PAHZZ	5305-00-054-6667	96906 MS51957-42	SCREW, MACHINE	EA	4	
6	19	XBHZZ		34257 5230003	SPACER, PLATE	EA	2	
6	20	PAHZZ	5305-00-763-7822	96906 MS51959-14	SCREW, MACHINE	EA	2	
6	21	PAHZA	6625-01-077-3550	34257 2020092-01	CIRCUIT CARD ASSEMB	EA	1	
6	22	PAHZA	6625-01-075-1150	34257 2020093-01	CIRCUIT CARD ASSEMB	EA	1	
6	23	PAHZZ		96906 MS17821-4	STRAP, TIEDOWN, ELEC	EA	V	
6	24	PAHHZ	6625-01-058-1555	34257 2010091-01	CIRCUIT CARD ASSEMB	EA	1	
6	25	PAHZZ	5310-00-933-8118	96906 MS35338-135	WASHER, LOCK	EA	2	
6	26	PAHZZ	5310-00-595-6211	96906 MS15795-803	WASHER, LOCK	EA	2	
6	27	PAHZZ	6625-01-076-6630	34257 2020090-01	CIRCUIT CARD ASSEMB	EA	1	
6	28	PAHZZ	5310-00-773-7624	08226 REW620-6	WASHER, FLAT	EA	5	
6	29	XBHZZ		34257 5230002	GUIDE, CIRCUIT CARD	EA	4	
6	30	PAHZA	6625-01-075-1110	34257 2010094-01	MODULE ASSEMBLY	EA	1	
6	31	PAHZZ	5995-01-069-2274	34257 2040084-01	CABLE ASSEMBLY, RADI	EA	1	
6	32	PAHZZ	6625-01-076-6545	34257 2040094-01	CABLE ASSEMBLY	EA	1	

NATIONAL STOCK NUMBER AND PART NUMBER INDEX

STOCK NUMBER	FIGURE NO.	ITEM NO.	STOCK NUMBER	FIGURE NO.	ITEM NO.
5305-00-054-5637	2	53	5940-00-960-0124	5	22
5305-00-054-5647	2	3	5340-00-975-1908	1	23
5305-00-054-5647	5	12	5310-00-982-4999	4	9
5305-00-054-5648	2	26	5310-00-982-4999	5	4
5305-00-054-5648	6	4	5310-00-982-4999	6	9
5305-00-054-5649	2	13	5310-00-982-6813	2	8
5305-00-054-5654	2	7	6150-01-004-8773	1	21
5305-00-054-6650	1	4	5935-01-005-0017	5	25
5305-00-054-6650	2	31	5999-01-035-7465	5	26
5305-00-054-6650	3	9	5930-01-041-8136	5	2
5305-00-054-6650	6	16	5961-01-047-6728	6	6
5305-00-054-6651	2	19	6625-01-051-1984	5	9
5305-00-054-6652	1	2	6625-01-058-1555	6	24
5305-00-054-6652	2	36	5310-01-059-3597	2	10
5305-00-054-6652	3	7	5995-01-069-2246	2	47
5305-00-054-6652	5	15	5995-01-069-2274	6	31
5305-00-054-6667	6	18	6625-01-075-1110	6	30
5305-00-054-6671	3	1	6625-01-075-1150	6	22
5305-00-139-6757	1	17	6625-01-075-2662	2	27
5920-00-227-6179	5	11	6625-01-075-2663	2	21
5930-00-499-7397	4	1	6625-01-075-2664	2	23
5310-00-543-2739	3	2	6625-01-075-2665	2	28
5310-00-543-2739	6	17	6625-01-075-2666	2	30
5935-00-544-5684	5	20	6625-01-076-6545	6	32
5310-00-550-3715	2	14	6625-01-076-6630	6	27
5310-00-595-6211	2	25	6625-01-076-6633	2	22
5310-00-595-6211	6	26	6625-01-076-6634	2	24
5310-00-595-6761	2	52	6625-01-076-6636	2	17
5310-00-616-3555	1	3	6625-01-077-3550	6	21
5310-00-616-3555	2	9	6625-01-077-6512	2	35
5310-00-616-3555	3	6	6625-01-077-8782	6	2
5310-00-616-3555	5	14	5999-01-078-7063	2	29
5310-00-616-3555	6	15	5999-01-078-9624	2	6
5305-00-727-8832	1	11	5999-01-078-9625	2	12
5305-00-763-6963	1	7	6625-01-079-9076	2	45
5305-00-763-7822	6	20	6625-01-080-2000	2	20
5310-00-773-7624	6	28	5995-01-084-8166	2	38
5310-00-782-1349	2	5	5995-01-084-8167	2	41
5310-00-782-1349	6	8	5995-01-084-8168	2	40
5310-00-812-4294	2	50	5995-01-084-8169	2	39
5940-00-820-6235	5	5	5995-01-084-8170	2	42
5340-00-865-0220	1	24	5995-01-084-8171	2	43
5310-00-880-5976	2	32	5995-01-084-8172	2	44
5310-00-880-5976	6	14	5995-01-085-3754	2	37
5310-00-928-2690	2	51	6625-01-126-2102	6	13
5310-00-933-8118	2	4	5999-01-129-0042	2	18
5310-00-933-8118	6	25			

FSCM	PART NUMBER	FIGURE NO.	ITEM NO.	FSCM	PART NUMBER	FIGURE NO.	ITEM NO.
81349	F02B250V1-1/2A	5	11	96906	MS51957-13	2	3
91836	KC-79-35	5	20	96906	MS51957-13	5	12
26863	LTBTM400	4	10	96906	MS51957-14	2	26
04713	MJE350	6	6	96906	MS51957-14	6	4
96906	MS15795-802	2	52	96906	MS51957-15	2	13
96906	MS15795-803	2	25	96906	MS51957-20	2	7
96906	MS15795-803	6	26	96906	MS51957-26	1	4
96906	MS15795-804	2	5	96906	MS51957-26	2	31
96906	MS15795-804	6	8	96906	MS51957-26	3	9
96906	MS15795-806	2	32	96906	MS51957-26	6	16
96906	MS15795-806	6	14	96906	MS51957-27	2	19
96906	MS17821-4	6	23	96906	MS51957-28	1	2
96906	MS21044-C04	4	9	96906	MS51957-28	2	36
96906	MS21044-C04	5	4	96906	MS51957-28	3	7
96906	MS21044-C04	6	9	96906	MS51957-28	5	15
96906	MS21044-C06	2	8	96906	MS51957-3	2	53
96906	MS35333-70	2	14	96906	MS51957-42	6	18
96906	MS35333-71	1	3	96906	MS51957-46	3	1
96906	MS35333-71	2	9	96906	MS51959-14	6	20
96906	MS35333-71	3	6	96906	MS51959-28	1	7
96906	MS35333-71	5	14	96906	MS51959-29	1	11
96906	MS35333-71	6	15	80205	NAS671C2	2	50
96906	MS35333-72	3	2	86797	RB-67-0-M	2	16
96906	MS35333-72	6	17	08226	REW620-6	6	28
96906	MS35338-134	2	51	27264	09-50-7031	5	25
96906	MS35338-135	6	25	83330	1497	5	22
96906	MS35338-135	2	4	83330	1416-4	5	5
96906	MS51861-34C	1	17	08717	2L5S-RTP-FL-5/15	6	2

NATIONAL STOCK NUMBER AND PART NUMBER INDEX

NOTE: LATEST NATIONAL STOCK NUMBER AND PART NUMBER ASSIGNMENTS ARE INCLUDED AT END OF INDEX

FSCM	PART NUMBER	FIGURE NO.	ITEM NO.	FSCM	PART NUMBER	FIGURE NO.	ITEM NO.
34257	2010086-01	2	35	34257	5000096	1	8
34257	2010090-01	1	1	34257	5000096	1	16
34257	2010091-01	6	24	34257	5000096	1	28
34257	2010094-01	6	30	34257	5000097	1	20
34257	2010097-02	6	2	34257	5000097	1	27
34257	2010113-01	6	13	34257	5000220	2	15
34257	2010122-03	6	1	34257	5000220	6	5
34257	2010247-01	1	31	34257	5000221	6	7
34257	2010248-01	2	34	34257	5100055	4	7
34257	2010249-01	2	2	34257	5100056	4	8
34257	2010250-01	2	1	34257	5210003	3	5
34257	2010251-01	1	26	34257	5210005	3	15
34257	2010252-01	1	13	34257	5210016	5	23
34257	2010253-01	1	6	34257	5210023	1	29
34257	2010254-01	4	11	34257	5210024	1	15
34257	2010255-01	5	3	34257	5210034	6	10
34257	2010256-01	5	6	34257	5210058-01	6	12
34257	2010257-01	5	13	34257	5210061	3	14
34257	2010268-01	5	8	34257	5210089	4	6
34257	2020060-02	2	20	34257	5210098	3	13
34257	2020074-01	2	23	34257	5210119	5	29
34257	2020077-01	2	30	34257	5210126	3	8
34257	2020078-02	2	29	34257	5210128	4	4
34257	2020079-01	2	27	34257	5210132	2	33
34257	2020080-01	2	17	34257	5210142	5	21
34257	2020081-01	2	28	34257	5210181	1	9
34257	2020083-01	2	22	34257	5210182	3	16
34257	2020084-01	2	21	34257	5210183	1	12
34257	2020085-01	2	24	34257	5220002	1	19
34257	2020086-01	2	6	34257	5220003	1	18
34257	2020087-01	2	12	34257	5220004	3	12
34257	2020090-01	6	27	34257	5220016	4	5
34257	2020092-01	6	21	34257	5220019	5	1
34257	2020093-01	6	22	34257	5220025	3	10
34257	2020205-01	2	18	34257	5230002	6	29
34257	2040064-01	6	3	34257	5230003	6	19
34257	2040074-01	2	47	34257	5240001-18	3	4
34257	2040084-01	6	31	34257	5250001	3	3
34257	2040085-01	2	46	34257	5250002	3	17
34257	2040087-01	5	17	34257	5250011	3	11
34257	2040094-01	6	32	34257	5560004	1	22
34257	2040102-01	4	3	34257	5560005	1	25
34257	2040103-01	2	48	34257	5560034	1	5
34257	2040104-01	2	49	34257	5560037-01	5	24
34257	2040108-01	5	18	34257	5560037-04	5	27
34257	2040109-01	5	16	34257	5560120	1	10
34257	2040122-01	2	41	34257	5560126	1	30
34257	2040123-01	2	40	34257	5560138	5	7
34257	2040137-01	2	38	5245	6J4	5	9
34257	2040138-01	2	37	779	640429-4	5	28
34257	2040139-01	2	39	83330	652	1	24
34257	2040140-01	2	42	83330	655	1	23
34257	2040141-01	2	43	5245	70-1495	5	10
34257	2040142-01	2	44	16550	70630-137	5	26
34257	2040143-01	2	45	28480	8120-1348	1	21
34257	2610031	6	11	4009	83054SQ	4	1
34257	2640022	5	19	83330	8826	2	11
34257	4500008	5	2	83330	8827	2	10
21793	453458	1	14				

LATEST ADDITIONAL NATIONAL STOCK NUMBER LATEST ADDITIONAL PART NUMBER ASSIGNMENTS

STOCK NUMBER	FIGURE NO.	ITEM NO.	FSCM	PART NUMBER	FIGURE NO.	ITEM NO.
5920-00-230-9128	5	11A	27914	21001-0074	5	11A

By Order of the Secretary of the Army:

JOHN A. WICKHAM, JR.
General, United States Army
Chief of Staff

official:

ROBERT M. JOYCE
Major General, United States Army
The Adjutant General

DISTRIBUTION:

To be distributed in accordance with Special List.

RECOMMENDED CHANGES TO EQUIPMENT TECHNICAL PUBLICATIONS



THEN... JOT DOWN THE DOPE ABOUT IT ON THIS FORM. CAREFULLY TEAR IT OUT. FOLD IT AND DROP IT IN THE MAIL!

SOMETHING WRONG WITH THIS PUBLICATION?

FROM (PRINT YOUR UNIT'S COMPLETE ADDRESS)

Commander
Stateside Army Depot
ATTN: AMSTA-US
Stateside, N.J. 07703

DATE SENT

10 July 1975

PUBLICATION NUMBER

TM 11-5840-340-20P

PUBLICATION DATE

23 Jan 78

PUBLICATION TITLE

Radar Set AN/PRC-76

BE EXACT. PIN-POINT WHERE IT IS

PAGE NO	PARA-GRAPH	FIGURE NO	TABLE NO
33			
44		19	
45			

IN THIS SPACE TELL WHAT IS WRONG AND WHAT SHOULD BE DONE ABOUT IT:

For item 2, change the NSN to read: 5835-00-134-9186.
Reason: Accuracy.

Identify the cover on the junction box (item no. 5).
Reason: It is a separate item and is not called out on figure 19.

Add the cover of the junction box as an item in the listing for figure 19.
Reason: Same as above

TEAR ALONG PERFORATED LINE

S A M P L E

PRINTED NAME, GRADE OR TITLE, AND TELEPHONE NUMBER

SSG I. M. DeSpirit of 999-1776

SIGN HERE

DA FORM 2028-2
1 JUL 79

PREVIOUS EDITIONS ARE OBSOLETE.

P.S.--IF YOUR OUTFIT WANTS TO KNOW ABOUT YOUR RECOMMENDATION MAKE A CARBON COPY OF THIS AND GIVE IT TO YOUR HEADQUARTERS

SOMETHING WRONG WITH THIS PUBLICATION?



THEN... JOT DOWN THE DOPE ABOUT IT ON THIS FORM. CAREFULLY CUT IT OUT, FOLD IT AND DROP IT IN THE MAIL!

FROM: (PRINT YOUR UNIT'S COMPLETE ADDRESS)

DATE SENT

PUBLICATION NUMBER

PUBLICATION DATE

PUBLICATION TITLE

BE EXACT... PIN-POINT WHERE IT IS

IN THIS SPACE TELL WHAT IS WRONG AND WHAT SHOULD BE DONE ABOUT IT:

PAGE NO.

PARA-GRAPH

FIGURE NO.

TABLE NO.

CUT ALONG THIS LINE

PRINTED NAME, GRADE OR TITLE, AND TELEPHONE NUMBER

SIGN HERE

FILL IN YOUR
UNIT'S ADDRESS



FOLD BACK

DEPARTMENT OF THE ARMY

CUT ALONG THIS LINE

Commander
U.S. Army Missile Command
ATTN: AMSMI-MMC-LS-LP
Redstone Arsenal, AL 35898-5238

RECOMMENDED CHANGES TO EQUIPMENT TECHNICAL PUBLICATIONS

SOMETHING WRONG WITH THIS PUBLICATION?



THEN... JOT DOWN THE DOPE ABOUT IT ON THIS FORM. CAREFULLY CUT IT OUT, FOLD IT AND DROP IT IN THE MAIL!

FROM: (PRINT YOUR UNIT'S COMPLETE ADDRESS)

DATE SENT

PUBLICATION NUMBER

PUBLICATION DATE

PUBLICATION TITLE

BE EXACT... PIN-POINT WHERE IT IS

PAGE NO.

PARA-GRAPH

FIGURE NO.

TABLE NO.

IN THIS SPACE TELL WHAT IS WRONG AND WHAT SHOULD BE DONE ABOUT IT:

CUT ALONG THIS LINE

PRINTED NAME, GRADE OR TITLE, AND TELEPHONE NUMBER

SIGN HERE

FILL IN YOUR
UNIT'S ADDRESS



FOLD BACK

DEPARTMENT OF THE ARMY

CUT ALONG THIS LINE

Commander
U.S. Army Missile Command
ATTN: AMSMI-MMC-LS-LP
Redstone Arsenal, AL 35898-5238

SOMETHING WRONG

WITH THIS PUBLICATION?



THEN... JOT DOWN THE DOPE ABOUT IT ON THIS FORM. CAREFULLY CUT IT OUT, FOLD IT AND DROP IT IN THE MAIL!

FROM: (PRINT YOUR UNIT'S COMPLETE ADDRESS)

DATE SENT

PUBLICATION NUMBER

PUBLICATION DATE

PUBLICATION TITLE

BE EXACT... PIN-POINT WHERE IT IS

PAGE NO.

PARA-GRAPH

FIGURE NO.

TABLE NO.

IN THIS SPACE TELL WHAT IS WRONG AND WHAT SHOULD BE DONE ABOUT IT:

CUT ALONG THIS LINE - - - - -

PRINTED NAME, GRADE OR TITLE, AND TELEPHONE NUMBER

SIGN HERE

FILL IN YOUR
UNITS ADDRESS



FOLD BACK

DEPARTMENT OF THE ARMY

CUT ALONG THIS LINE

Commander
U.S. Army Missile Command
ATTN: AMSMI-MMC-LS-LP
Redstone Arsenal, AL 35898-5238

